



**MOTOR AVENUE
IMPROVEMENT ASSOCIATION**

A Voice for Smart Growth

P.O. Box 341248
Los Angeles, CA 90034
P (310) 202-9002
F (310) 202-0433

info@motorassociation.org
www.motorassociation.org

October 27, 2011

Dear Palms Neighborhood Council,

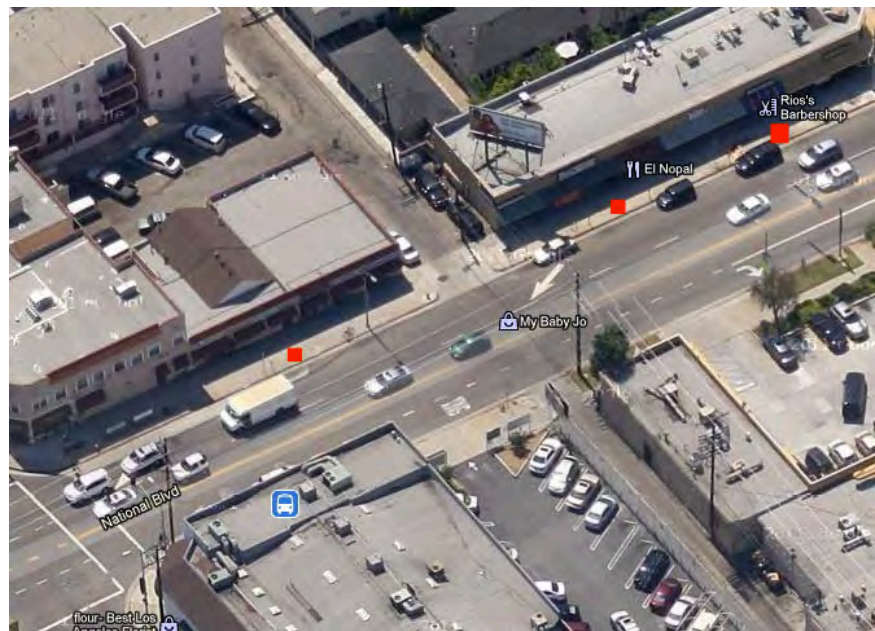
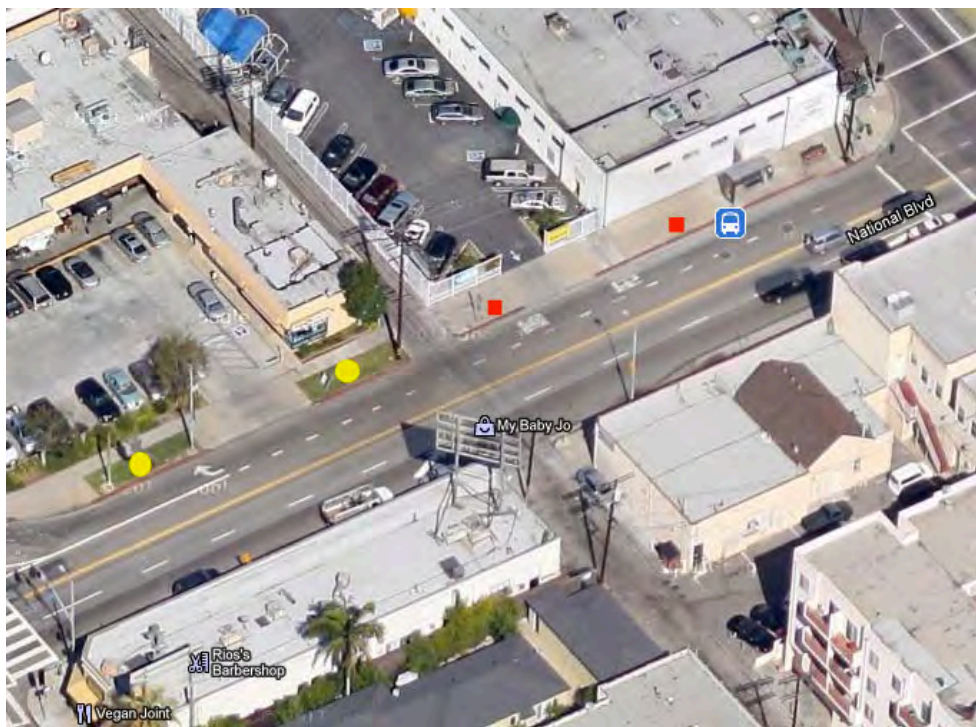
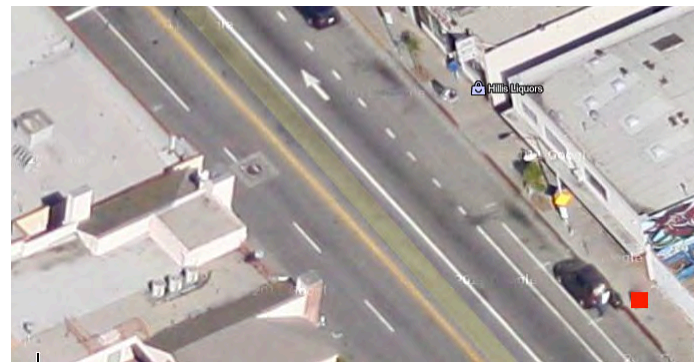
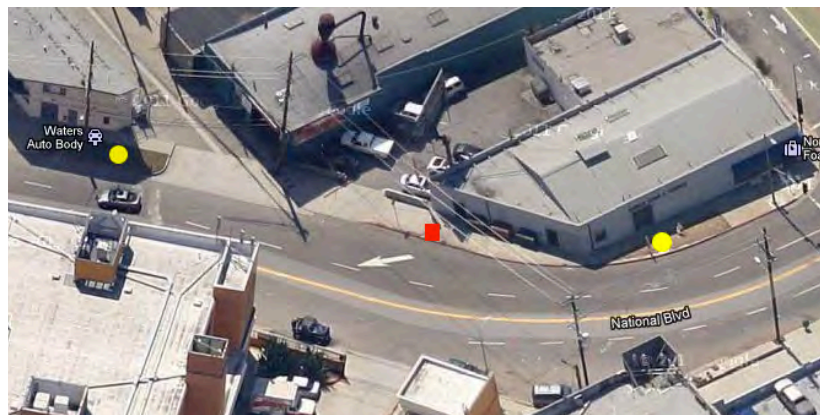
The Motor Avenue Improvement Association is requesting \$9,959 to complete the successful tree planting and maintenance program on Motor Avenue and National Boulevard, in partnership with the Koreatown Youth and Community Center and the Los Angeles Conservation Corps. This funding will cover the planting of 11 new trees, including 6 concrete cuts, as well as 3 months of watering for all 138 trees and professional trimming of the existing 127 trees. Although summer has passed, the trees still need watering until we begin to get more rain, especially the newly planted trees. In the event that we have a long period of rain and watering becomes unnecessary, the contract with KYCC can be extended to make up for the lost weeks. We have received a city permit to trim the trees (attached). Trimming the trees will encourage them to grow upwards rather than out, preventing them from blocking signage and becoming a hazard to pedestrians. The \$30/tree fee includes hauling and dumping fees. We will hire a certified arborist to do the trimming. The concrete cuts necessary for planting new trees will be made by the Los Angeles Conservation Corps. All cut locations will be approved by the city, and KYCC and LACC will ensure that the proper permits are filed. These organizations work on this type of project regularly and are familiar with the procedure. Administrative expenses include coordinating these activities between the 5+ organizations and city agencies involved; creating flyers and literature to distribute in the community regarding the project; providing training to local businesses for the continuing care of the trees.

The Motor Avenue Improvement Association will provide a full accounting of all payments made to vendors, and the Palms Neighborhood Council will be credited on all project materials and literature as having provided funding. We leave it up to the PNC to decide whether some of these funds should come from Council District 10.

ITEM	COST
Trimming of existing trees @ \$30/tree	\$3,810
Watering @ \$6 tree for 138 trees	\$828/month
Planting new Chinese Flame trees (12)	\$200
Concrete cuts for new trees @ \$320/4x4 cut (8)	\$2,560
Administrative Expenses	\$905
TOTAL	\$9,959

Sincerely,
Motor Avenue Improvement Association

Attachments:
-Tree trimming permit
-Map of proposed locations for new trees and concrete cuts



PERMIT TO PRUNE STREET TREES



Date: 8/11/2011

Permission is hereby granted to:

Motor Ave. Improvement Association
C/O Lee H. Wallach

SIR No.:
UFMS No.:
Phone: (310) 202-9002
Fax or
Email to:

**This permit is valid through
September 10, 2011**

to trim: 127 tree(s) at address: Motor Ave. from Venice Bl. to the 10 Freeway (Prune for training)

Tree(s) over 15 feet in height must be trimmed to ensure free passage of vehicle and pedestrian traffic upon streets and sidewalks.

Tree(s) or shrubs shall be trimmed so as to have a minimum clearance of:

1. 13 feet 6 inches over that portion of state highway or major street improved, designed or ordinarily used for vehicular traffic;
2. 11 feet over that portion of local streets improved, designed, or ordinarily used for vehicular traffic;
3. 9 feet over the sidewalk and parkway area of all streets.

In addition to the above, we request that you:

- Trim the trees in a professional manner in accordance with current arboriculture standards.
- Do not remove more than 25% of the live green foliage.
- Remove dead, diseased, damaged and crossing limbs.
- **Do not leave rips or stubs in the trees.**
- **Do not make topping cuts.**
- Remove any broken hanging limbs.
- Leave the tree(s) in a balanced, safe and aesthetically pleasing condition.

All street trees must be trimmed in accordance to the International Society of Arboricultural "Tree Pruning Guidelines", and the American National Standards Institute (ANSI A-300) "Tree, Shrub and Other Woody Plant Maintenance Standards Practices." Federal and State law prohibit destruction of raptor, migratory, and song birds. It is the contractor's or permittee's responsibility to ensure these laws are not violated during the execution of this permit.

All brush generated from the trimming of street trees must be properly disposed of at the permittee's expense immediately after the tree is trimmed. Brush must not be allowed to obstruct the street, sidewalk or parkway.

NOTE: This permit is not valid for the trimming of Coast Live Oak, Valley Oak, or Palm trees. Before issuing a trim permit for Coast or Valley oak trees, an onsite inspection by a Urban Forestry Division representative is required.

Thank you for your concern and support in the maintenance of the City's living infrastructure, the street trees of Los Angeles. If you have any questions, please contact the Urban Forestry Division at (213) 847-3077.

Issued by: Ron Henderson (323) 776-4140

SEVEN STEPS TO PROPER TREE PRUNING

1. HIRE A QUALIFIED ARBORIST

- Certified by the Western Chapter of the International Society of Arboriculture
- Hold a valid C61/D49 State contractors license
- Ask for local references

2. PROPER CUTS

- Pruning cuts shall be made in branch tissue just outside the branch bark ridge and collar, without causing injury to the tree
- No flush cuts shall be made
- No stubs shall be left in the tree
- Cuts shall have no ripping or tearing of the bark

3. PROPER THINNING

- Seldom should more than 25% of the trees foliage shall be removed
- Sufficient branch structure should remain in the interior of the tree
- Foliage shall be removed in a manner to leave the tree in symmetrical balance

4. PROPER CROWN RAISING

- Trees shall be raised to conform to Los Angeles Municipal Code (heights listed on trim permit)

5. CORRECTING DEFECTS

- Remove dead, diseased, damaged, and crossing limbs
- Remove any broken hanging limbs
- Perform crown restoration on previously topped or severely pruned trees

6. NO TOPPING CUTS SHALL BE MADE

- Topping cuts invite insects and decay
- New growth is weak and promotes profuse watersprout growth
- Depletes trees energy stores
- Reduces photosynthesis
- Prohibits trees' ability to gather and process sunlight reducing survivability

7. PERMITS/INSPECTION

- Street tree pruning requires a permit from the Urban Forestry Division
- A follow-up tree inspection shall be performed after street trees have been pruned

All street trees shall be pruned to comply with the ISA Tree Pruning Guidelines and the ANSI A300 standards. Federal and State law prohibit destruction of raptor, migratory, and song birds. It is the contractor's or permittee's responsibility to ensure these laws are not violated during the execution of a pruning permit.

If you have any further questions, please refer to the Urban Forestry Division Inspector or contact the Division at (213) 847-3077. For the hearing-impaired, the TDD number is 311. This and other information sheets may be obtained at the Urban Forestry Division office at 1149 South Broadway, 4th Floor, Los Angeles, CA 90015 or online at <http://www.lacity.org/boss/index.htm>

As a covered entity under Title II of the Americans with Disabilities Act, the City of Los Angeles does not discriminate on the basis of disability and, upon request, will provide reasonable accommodation to ensure equal access to its programs, services and activities